



midwest
architecture community
collaboration

Grant Ecker

Vice President, Global Enterprise Architecture



FUTURE	2020	2016	2011	2002	1997
Walgreens Boots Alliance	Medtronic	Lowe's	General Mills	Stanford WAM!NET	
Vice President	Sr. Director	Sr. Manager	Manager	Inventor	Intern
Architecture	Architecture	Architecture IT HR Collaboration	Collaboration Manufacturing Internet	eLearning	
Executive Coach	International Coaching Federation	MBA	Carlson School of Management	BSCS	Washington University



WHAT



IS



WBA?

Two iconic retail brands



Walgreens



Boots

Anchored by iconic brands, Walgreens and Boots, the company is meeting customer needs through our convenient retail locations, digital platforms and health and beauty products, while working to shape the future of healthcare by bringing more innovative healthcare offerings to our customers and patients

Anchored in two divisions



Walgreens **DUANE**reade

One of the largest drugstore chains in the U.S.

- Two great retail pharmacy brands: **Walgreens** and **Duane Reade**
- 9,021* drugstores in 50* states, the District of Columbia, Puerto Rico and the U.S. Virgin Islands
- Approximately 8* million in-store and online daily customer interactions each day



Boots **farmacias ahumada** **farmacias benavides**

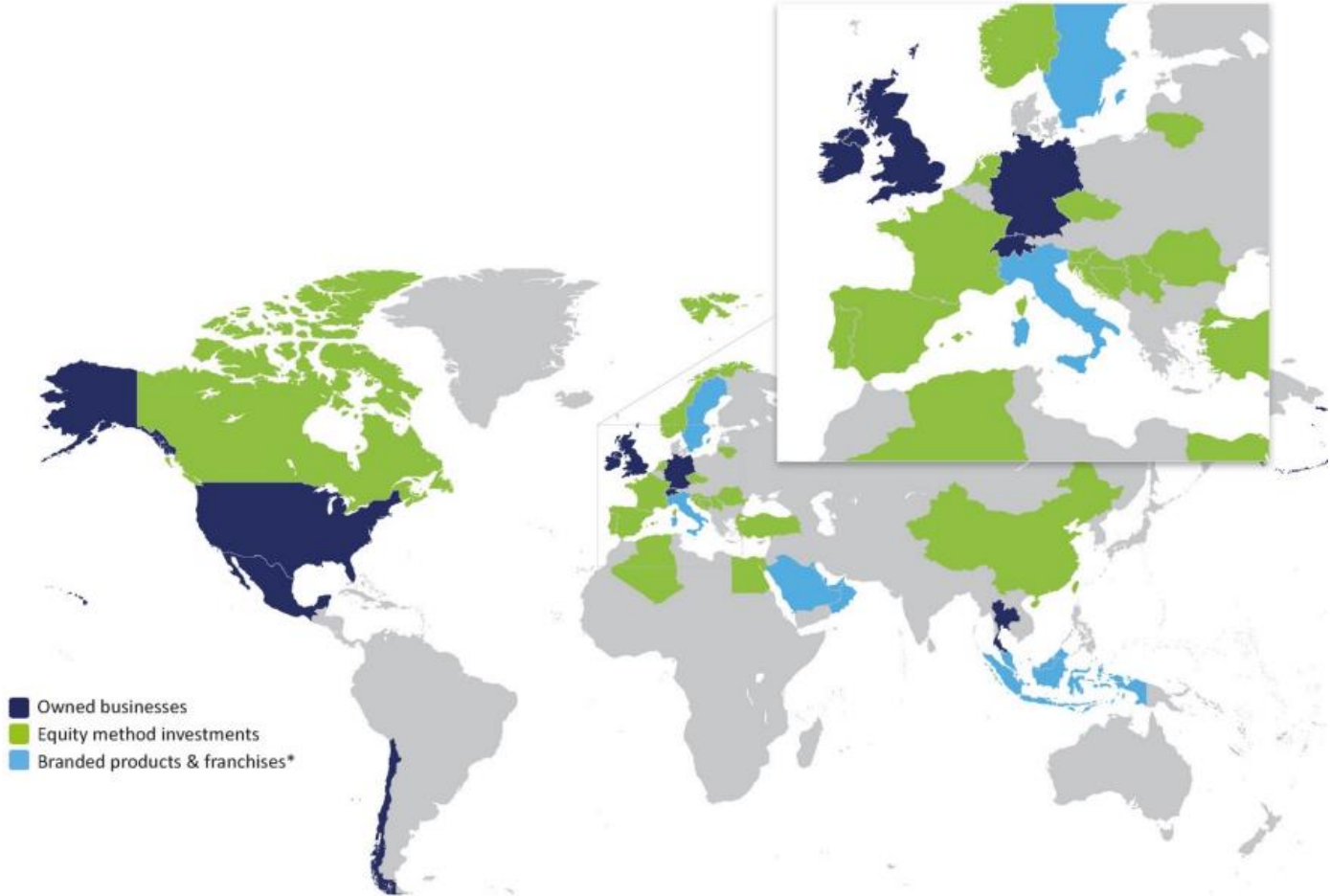
Strong market positions in Europe, Latin America and Asia

- Principal retail brands: **Boots** in the UK, Thailand, Norway, the Republic of Ireland, the Netherlands and Lithuania, **Farmacias Benavides** in Mexico and **Farmacias Ahumada** in Chile
- 4,428* pharmacy-led health and beauty retail stores in eight* countries, with a growing online presence

**Figures as of Aug. 31, 2020*

***For 12 months ending Aug. 31, 2020*

Across a growing global presence



Presence in **more than 25*** countries

More than **450,000*** people employed

One of the world's **largest purchasers** of prescription drugs and many other health and well-being products

The largest retail pharmacy, health and daily living destination across the U.S. and Europe

A global leader in pharmacy-led, health and well-being retail with more than **21,000*** stores in **11*** countries

*Countries where the Company's products are available for purchase or there are Company franchises (other than those countries where there are owned businesses, equity method investments or joint ventures)

* As of Aug. 31, 2020, including equity method investments

Chief Architect and Strategist, Red Hat

E.G.Nadhan



FUTURE

2020

2015

1983

Red Hat

Chief Architect
and Strategist

**The HDF
Group**

Board of Directors

**HP Enterprise
Services (EDS)**

Distinguished
Technologist

MSU CX Advisory Board

The Open Group

Missouri State
University

Harvard University
(HP Leadership)

Jadavpur
University

The world's leading provider of open source enterprise IT solutions

More than
90%
of the
Fortune
500
use
Red Hat
products and
solutions¹

~16,000
employees

105+
offices

40+
countries

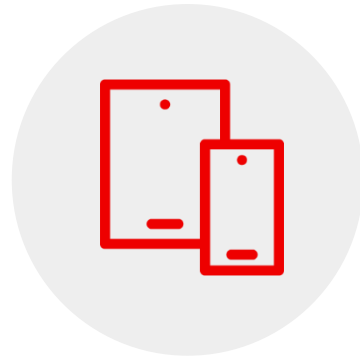
The first
\$3
billion
open
source
company
in the world²

Trusted by leading companies around the world



100%

of airlines in the Fortune Global 500 rely on Red Hat.



100%

of communication service providers in the Fortune Global 500 rely on Red Hat.



100%

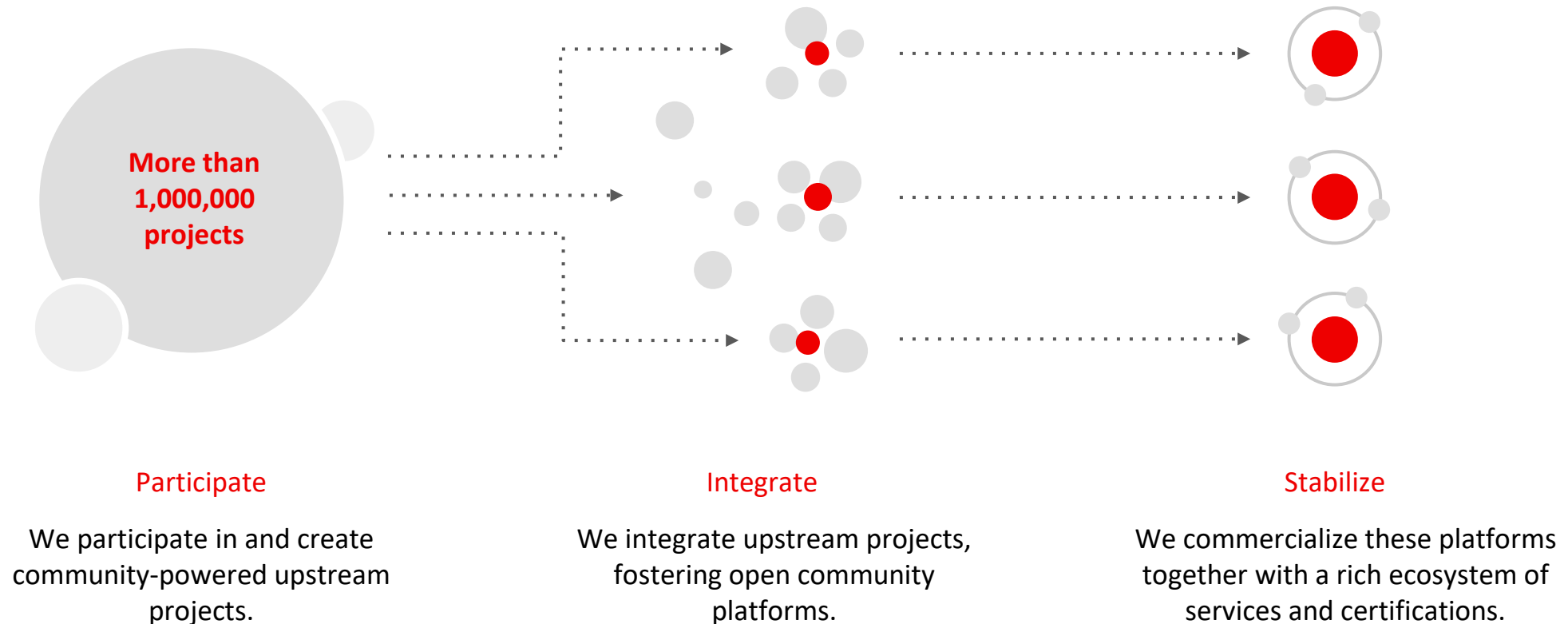
of commercial banks in the Fortune Global 500 rely on Red Hat.



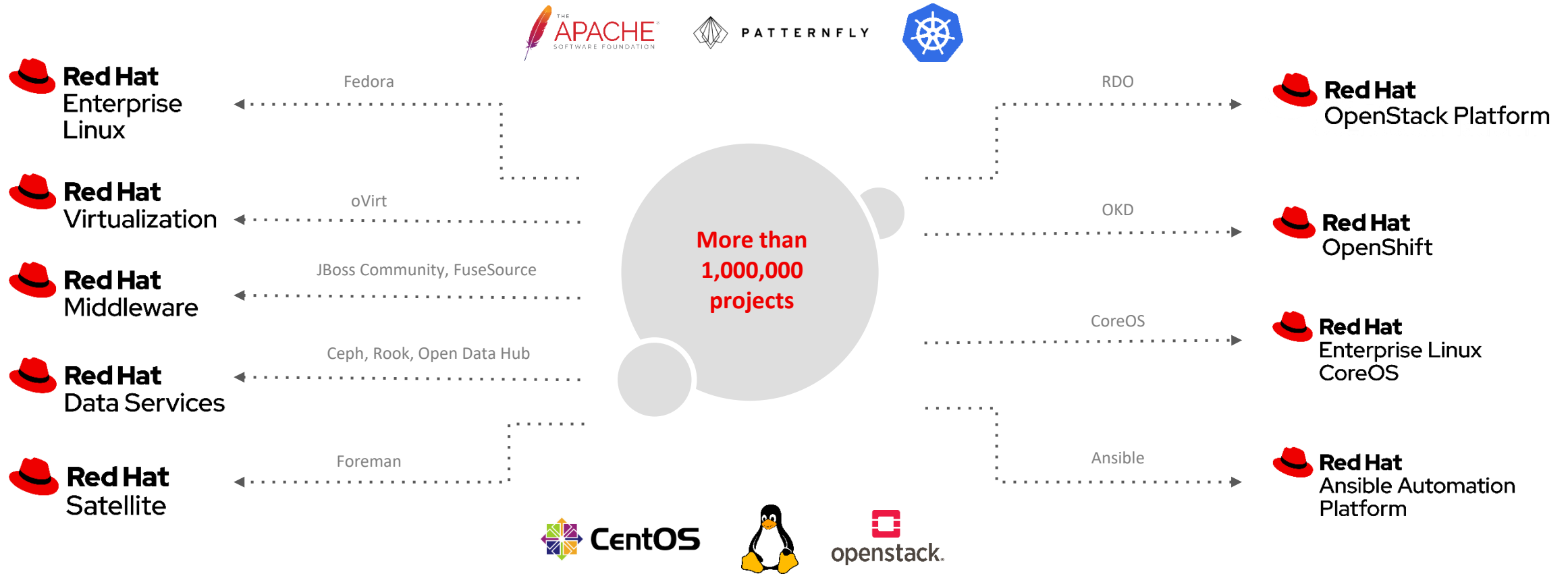
100%

of healthcare companies in the Fortune Global 500 rely on Red Hat

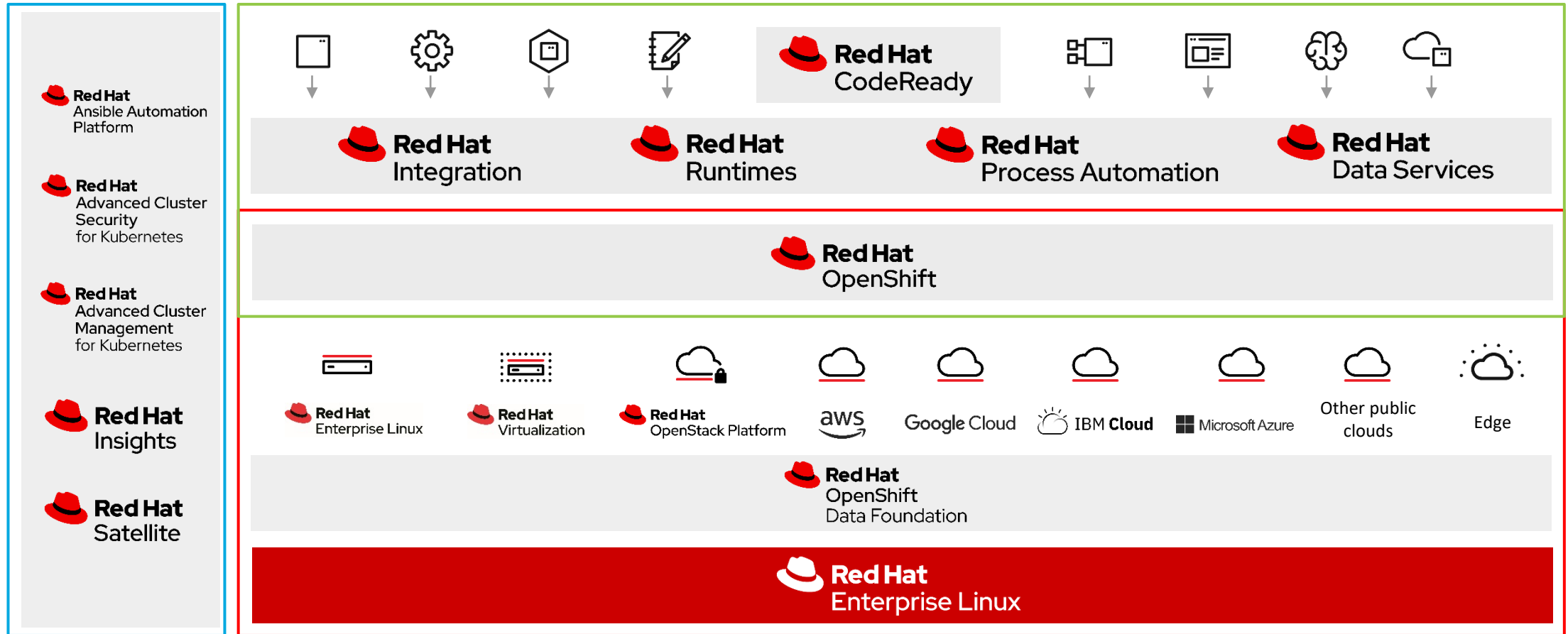
Product development model



From communities to enterprise



Addressing these challenges with a broad portfolio



Leading Global Technical Communities

An Enterprise Architecture Story



Grant Ecker
VP Global Enterprise Architecture
Walgreens Boots Alliance



E.G. Nadhan
Chief Architect & Strategist
Red Hat





**A Chief
Architect acts...**

As part Coach

&

As part Referee

As part Coach

We align and champion the team with our trust





As part **Coach**

We create opportunities to try



As part **Coach**

We engage in learning moments



As part **Coach**

We celebrate and recognize the team's success

A Chief Architect

Shapes IT Strategy...

Company Strategies

Company Strategy

Business Strategies

Business Strategy A

Business Strategy B

Business Strategy C

IT Strategies

IT Strategy 1

IT Strategy 2

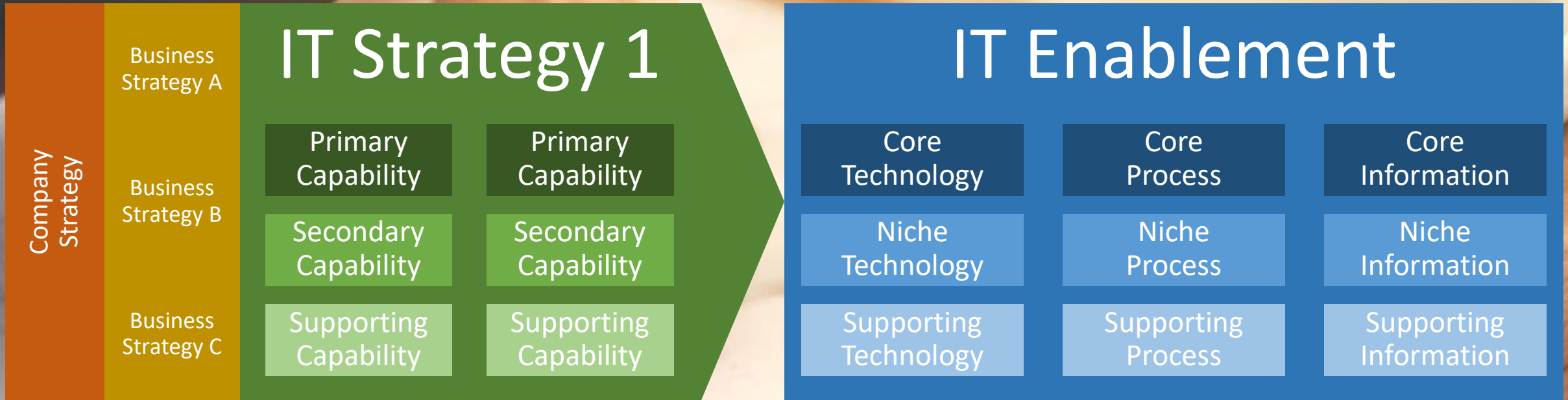
IT Strategy 3

IT Strategy 4



A Chief Architect

Then Bridges the Strategy into Execution

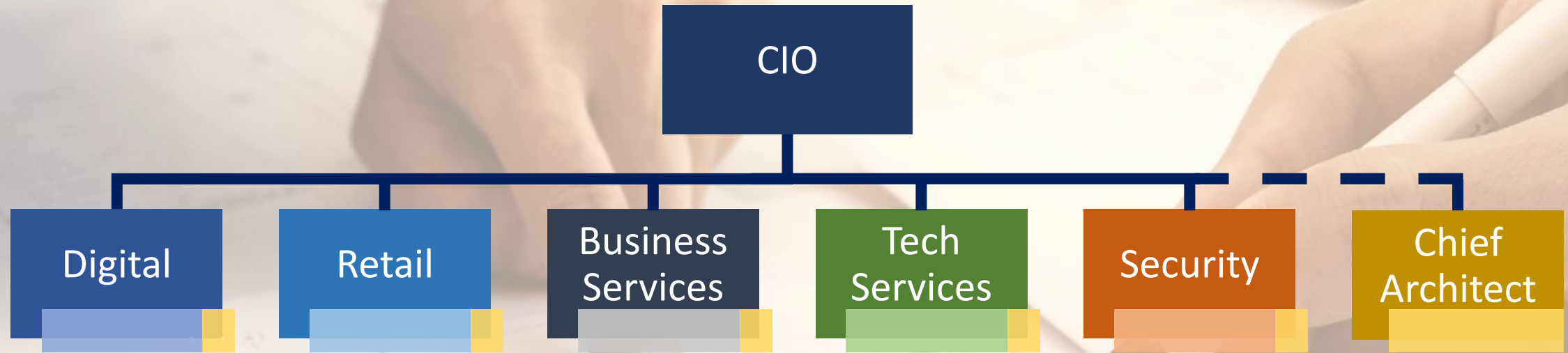


First discovering what to build...

...then collaborating to on how to build it

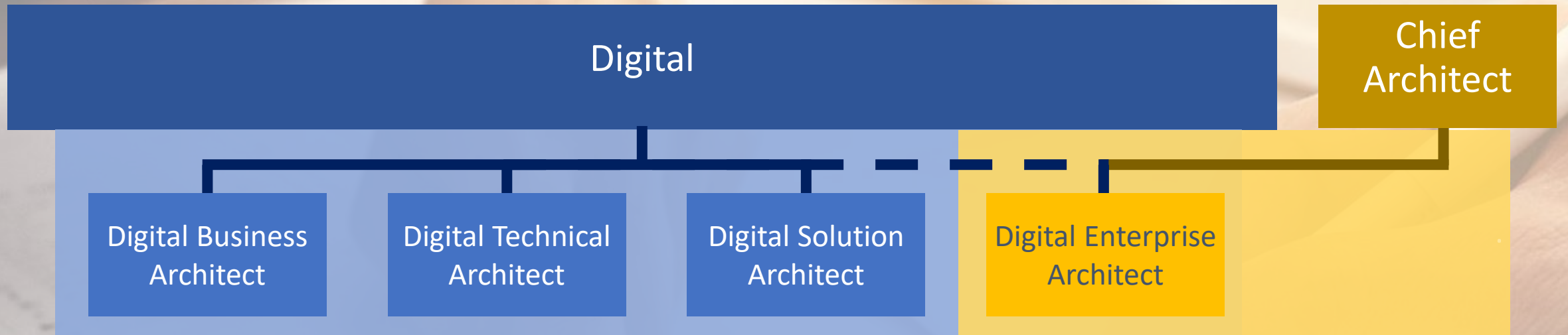
A Chief Architect

Aligns EA Talent to the CIO's Staff...



Then the Domain's Enterprise Architect

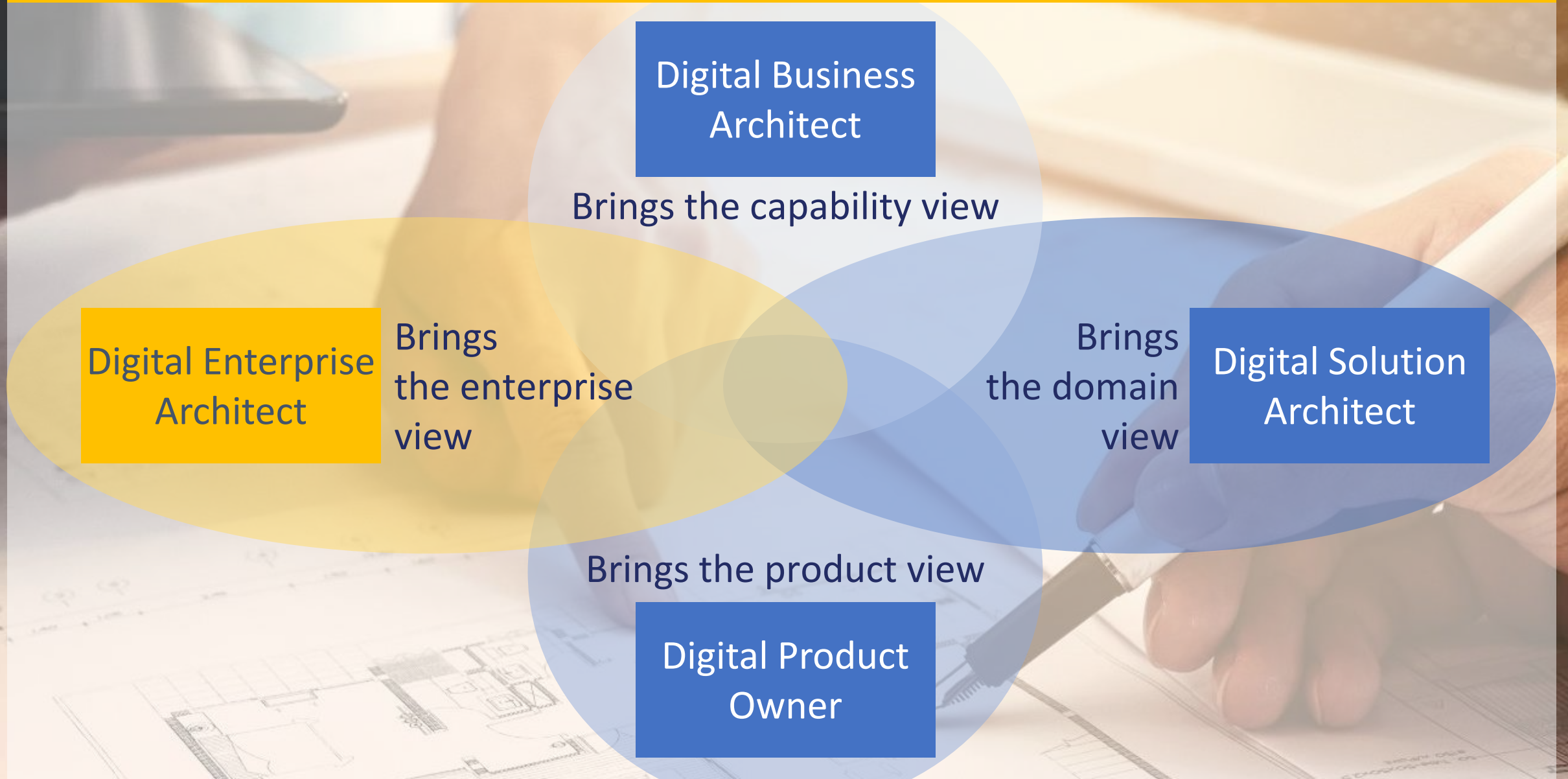
Aligns Architects Across the Domain...



First defining desired outcomes...

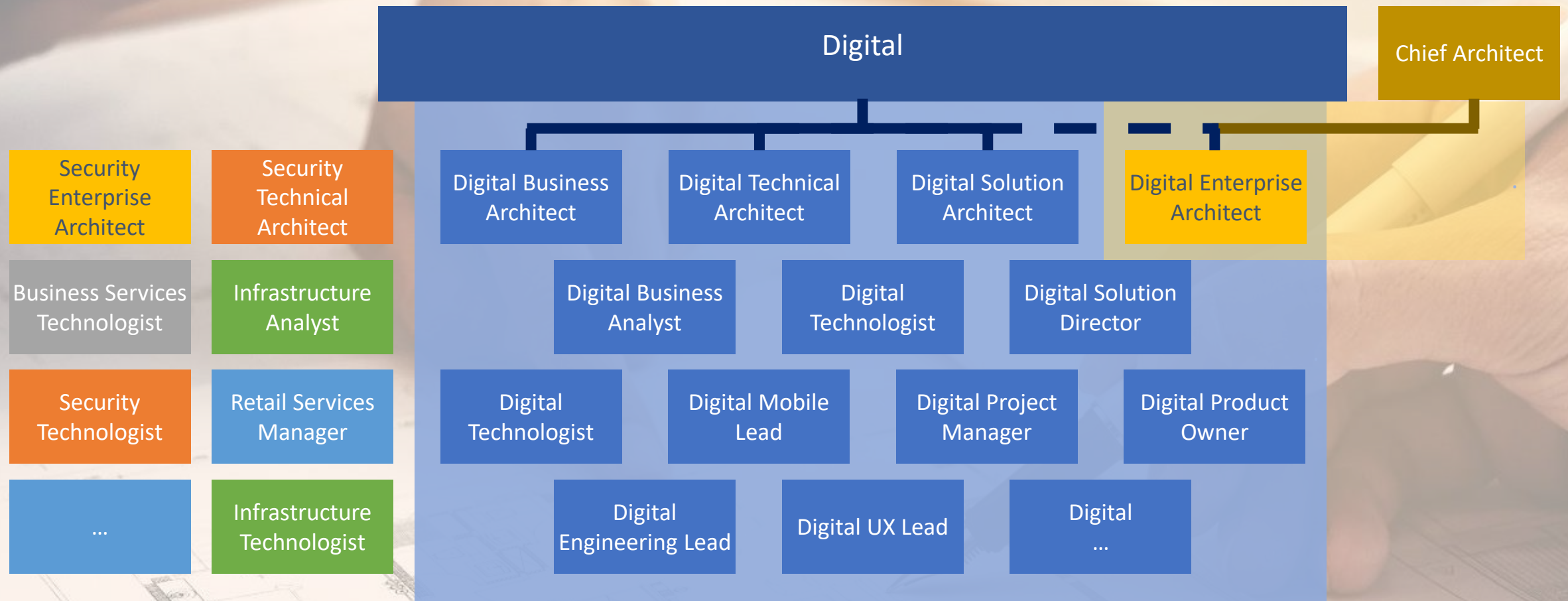
...then collaborating to build the architecture

The Domain's Architects Build a Trusted Partnership



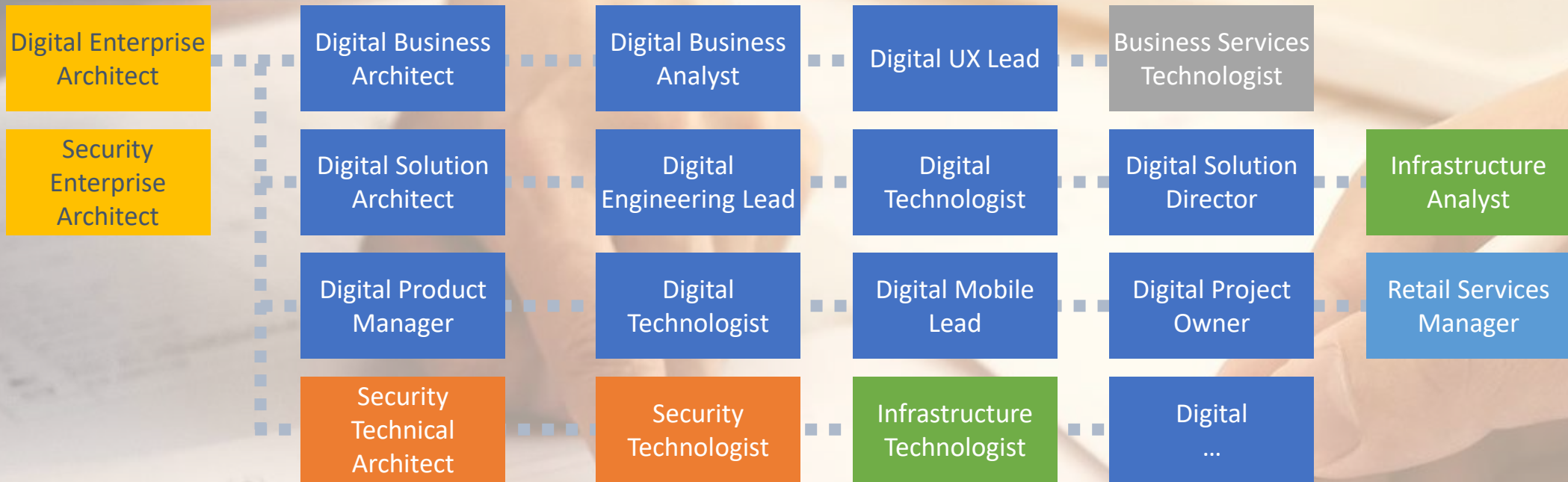
And Together the Domain's Architects

Builds Intra-IT Community & Collaboration



To Align the Architecture with the Company's

Driving Intra-IT Execution & Delivery

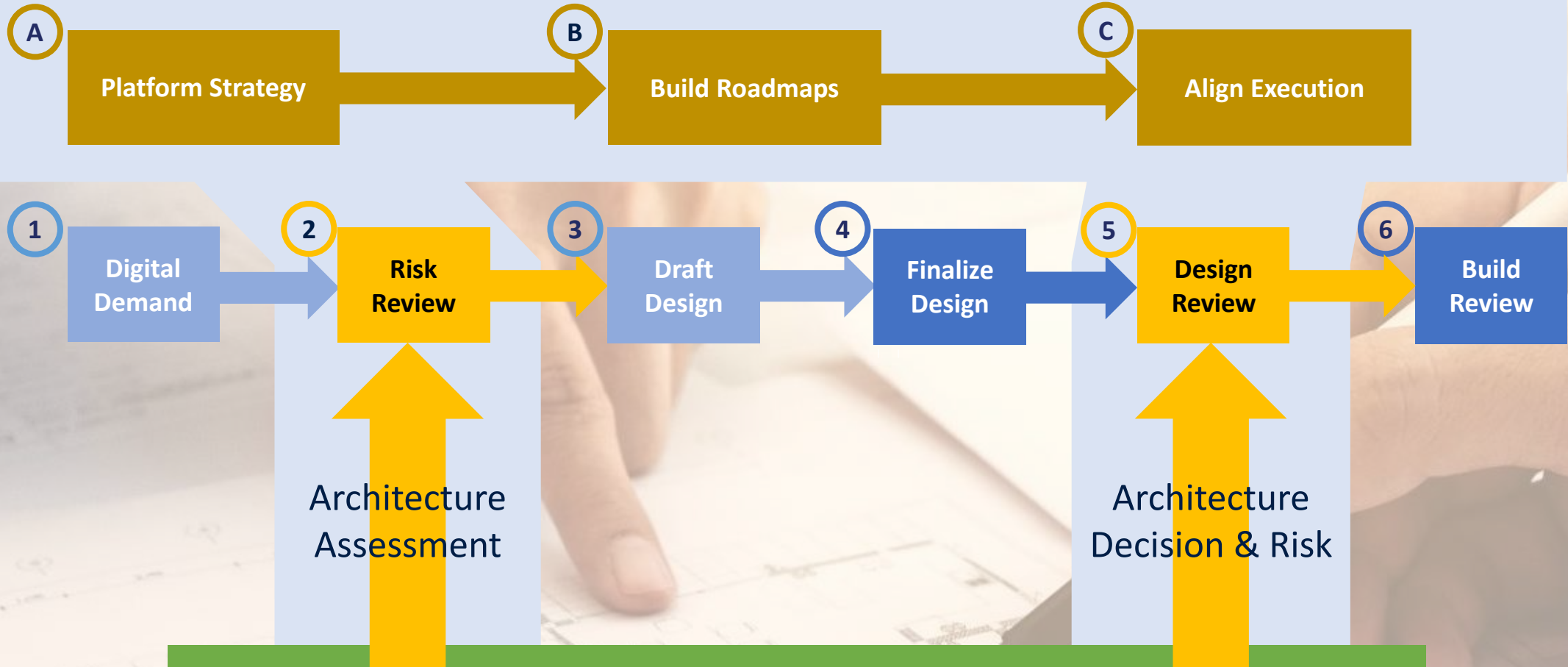


Including the most knowledgeable

...and adjusting together for enterprise outcomes

This Enables our Platform's Realization

Digital Platform Architecture



... which brings us to our other role ...



**A Chief
Architect acts...**

As part Coach

As part Referee



A photograph of a football game. In the foreground, a player in a blue jersey with the number 86 is tackling a player in a white jersey. Another player in a white jersey with the number 18 is also visible. A referee in a black and white striped shirt is in the background, holding a yellow flag. A red flag is also visible. A black sign with the number 1 is in the background. A yellow sign with the number 10 is in the foreground. The scene is on a grassy field.

As part Referee

We throw the flags



As part Referee

We challenge the team



As part Referee

We arbitrate the outcome

As Coach and as Referee...



We avoid creating an architectural nightmare...

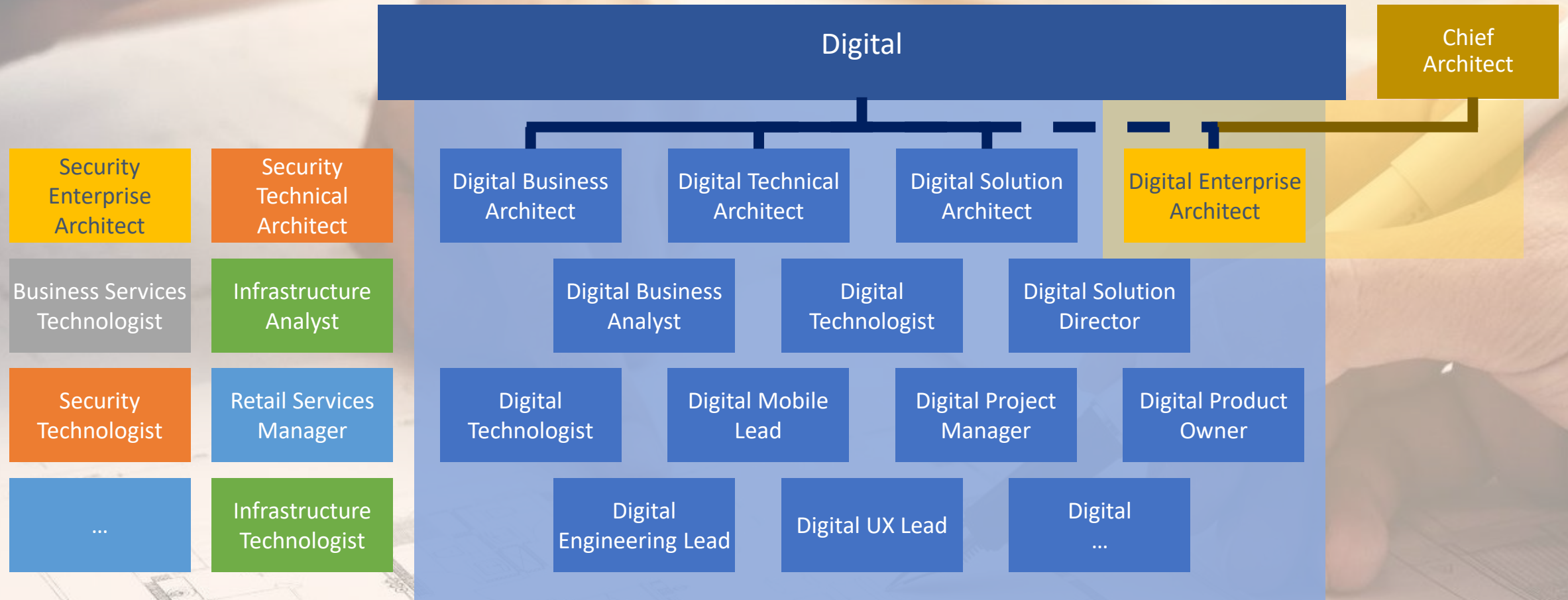
As **Coach** and as Referee...



We find the patterns for reuse...

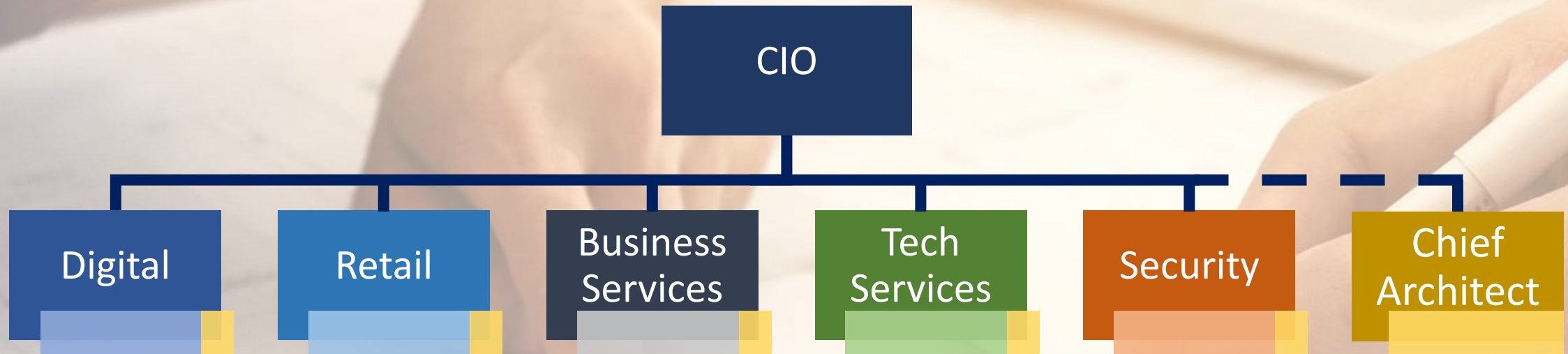
Architecture Collaboration & Sharing

Expands Beyond our Communities...



Into Company-wide Architecture Discussions

Where We Share Our Best Work

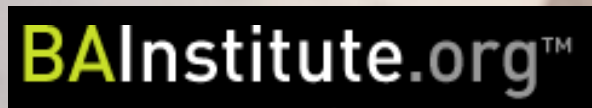


To celebrate our successes

...and create consistency in our approach ...

And Communities Expand Beyond Our Organizations

To Share and Lean into our Profession



A Chief Architect Drives Outcomes

As Coach & Referee for our Technical Community

We **Coach** and work together to...

- Be part of each other's success
- Ground theory and balance solutions
- Build have a trusted global technical hotline

We **Referee** for enterprise outcomes to...

- To create accountability to win together
- To break stalemates at enterprise altitudes
- To find the logical and optimal company solution





**Our compass is aligned
with our purpose**



**Both as the Coach
and as the Referee**



Let's Play the Game!

of Enterprise Architecture...

Share your Thoughts!

about technical community leadership

